



# Bridger Canyon Corridor Planning Study

## STUDY DESCRIPTION

The Montana Department of Transportation (MDT) has completed the Bridger Canyon Corridor Planning Study to identify issues, constraints, and potential opportunities for improvements within the Montana Highway 86 (MT 86) corridor north of Bozeman.

## WHAT ARE THE CORRIDOR NEEDS?

Needs and objectives for the Bridger Canyon Corridor Planning Study were developed based on existing and projected conditions within the corridor, input from the public and resource agencies, and coordination with the study advisory committee.

**Need 1: Improve the safety of MT 86 for all users.**

**Need 2: Maintain infrastructure assets in the corridor.**

View the full list of corridor needs and objectives online at [www.mdt.mt.gov/pubinvolve/bridger](http://www.mdt.mt.gov/pubinvolve/bridger)

## INSIDE THIS ISSUE

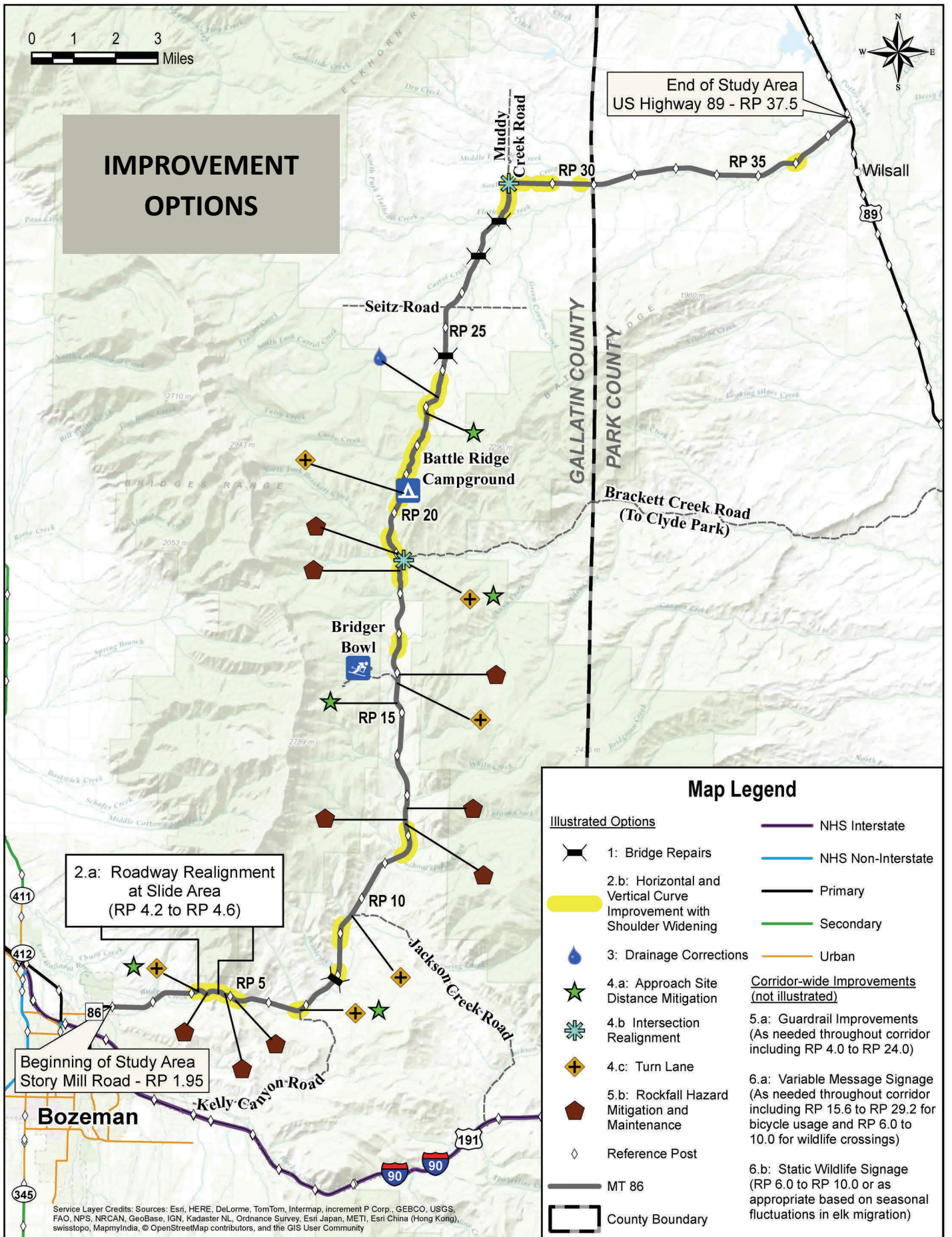
- Study Description ..... 1
- Corridor Needs ..... 1
- Improvement Options Figure ..... 2
- Improvement Options List ..... 3
- Study Contacts..... 4
- Involvement Opportunities ..... 4
- Anticipated Study Schedule ..... 4

## PLEASE JOIN US FOR AN INFORMATIONAL MEETING!

**Thursday, April 2, 2015  
at 6:00 p.m.**

**Bridger Canyon Fire Hall  
8081 Bridger Canyon Rd.**

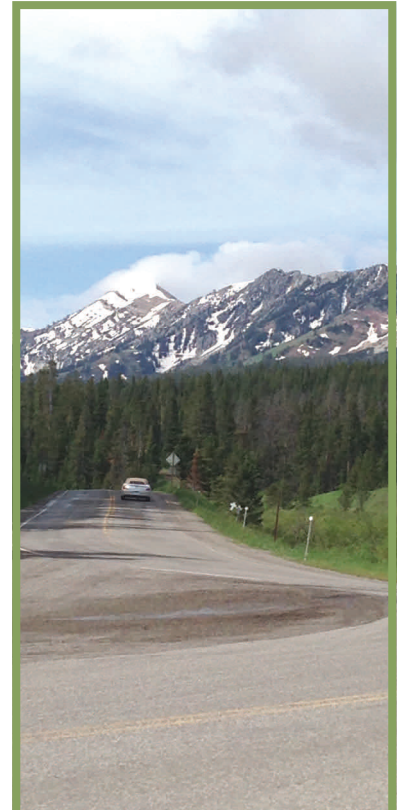
The purpose of the meeting is to present the draft corridor study.



## IMPROVEMENT OPTIONS

The table below lists a range of options MDT may consider for implementation in the MT 86 corridor in the future. MDT may elect to implement a single option or combine multiple options at the time a project is nominated. Improvements are not listed in order of priority. In some cases, minor improvements (such as cleaning culverts to improve drainage) may be accomplished through routine maintenance activities as funds become available. Additionally, MDT may incorporate select study recommendations into projects that are currently programmed for design and construction. At this time, no funding has been dedicated to corridor improvements identified in this study.

Number	Description	Location
Option 1	Bridge Repairs	RP 7.8 (Stock Pass) RP 24.4 (Cache Creek) RP 26.8 (Carrol Creek) RP 28.0 (Flathead Creek)
Option 2.a	Roadway Realignment at Slide Area	RP 4.3 to RP 4.6 (slide area)
Option 2.b	Horizontal and Vertical Curve Improvements with Shoulder Widening	Various locations from RP 4.1 to RP 35.8
Option 3	Drainage Corrections	RP 23.4
Option 4.a	Approach Sight Distance Mitigation	RP 4.2 ("M" Trailhead) RP 6.7 (Kelly Canyon Road) <sup>(3)</sup> RP 15.2 (Private Approach) RP 18.8 (Brackett Creek) <sup>(3)</sup> RP 22.7 (Private Approach)
Option 4.b	Intersection Realignment	RP 18.8 (Brackett Creek) RP 28.8 (Muddy Creek Road)
Option 4.c	Turn Lanes	RP 4.2 ("M" Trailhead) RP 6.7 (Kelly Canyon Road) RP 9.5 (Jackson Creek Road) RP 15.7 (Bridger Bowl) RP 18.8 (Brackett Creek) RP 20.5 (Battle Ridge Campground)
Option 5.a	Guardrail Improvements	As needed throughout corridor
Option 5.b	Rockfall Hazard Mitigation and Maintenance	RP 4.4      12.7 RP 4.8      16.0 RP 5.2      18.6 RP 12.3     19.0 RP 12.4
Option 6.a	Variable Message Signage	As needed throughout corridor
Option 6.b	Static Wildlife Signage	RP 6.0 to 10.0 or where needed



## STUDY CONTACTS

**Jeff Ebert**  
MDT Butte District  
Administrator  
406-494-9625  
jebert@mt.gov

**Katie Potts**  
MDT Project Manager  
406-444-9238  
kpotts@mt.gov

**Sarah Nicolai**  
DOWL Project Manager  
406-324-7412  
snicolai@dowl.com

## INVOLVEMENT OPPORTUNITIES

An informational meeting is scheduled for **Thursday, April 2, 2015**, at the Bridger Canyon Fire Hall, 8081 Bridger Canyon Road, from **6:00 p.m. to 8:00 p.m.** The purpose of the meeting is to present the draft corridor study, discuss recommended improvement options, and request feedback. We encourage you to attend and **provide comments by April 17, 2015**. Please visit the study website to view the draft corridor study report ([www.mdt.mt.gov/pubinvolve/bridger](http://www.mdt.mt.gov/pubinvolve/bridger)).

MDT attempts to provide accommodations for any known disability that may interfere with a person's participation in any service, program or activity of the department. Alternative accessible formats of this information will be provided upon request. For more information, please call Sarah Nicolai at (406) 324-7412 or Montana Relay at 711.

# BRIDGER CANYON Corridor Planning Study

