
BRIDGER
FOOTHILLS
FIRE

PRESENTED BY:
NORTHWEST MANAGEMENT
INC.



NORTHWEST

MANAGEMENT, INC.



WHO WE ARE

Northwest Management Inc was founded in 1984 and draws on 36 years of experience to provide expertise in forestry, wildfire, water resources, wildlife, hazard management, and planning.

Our team of professionals works hard to maintain the beauty, serenity and function of our natural resources, Northwest Management Inc. provides consultation, management and conservation expertise to clients throughout the Western U. S.. Our mission, to provide a balanced approach to natural resource management for all landowners large, small, private and public, is achieved through expertise in forestry, hydrology, rangeland ecology, wildlife, resource planning and environmental auditing.



NMI FORESTERS

Eric Hoberg

Senior Forester

Graduated with a BS in Forest Resource Management from the University of Montana

Worked at Northwest Management Inc. since 2006

Chuck Gesme

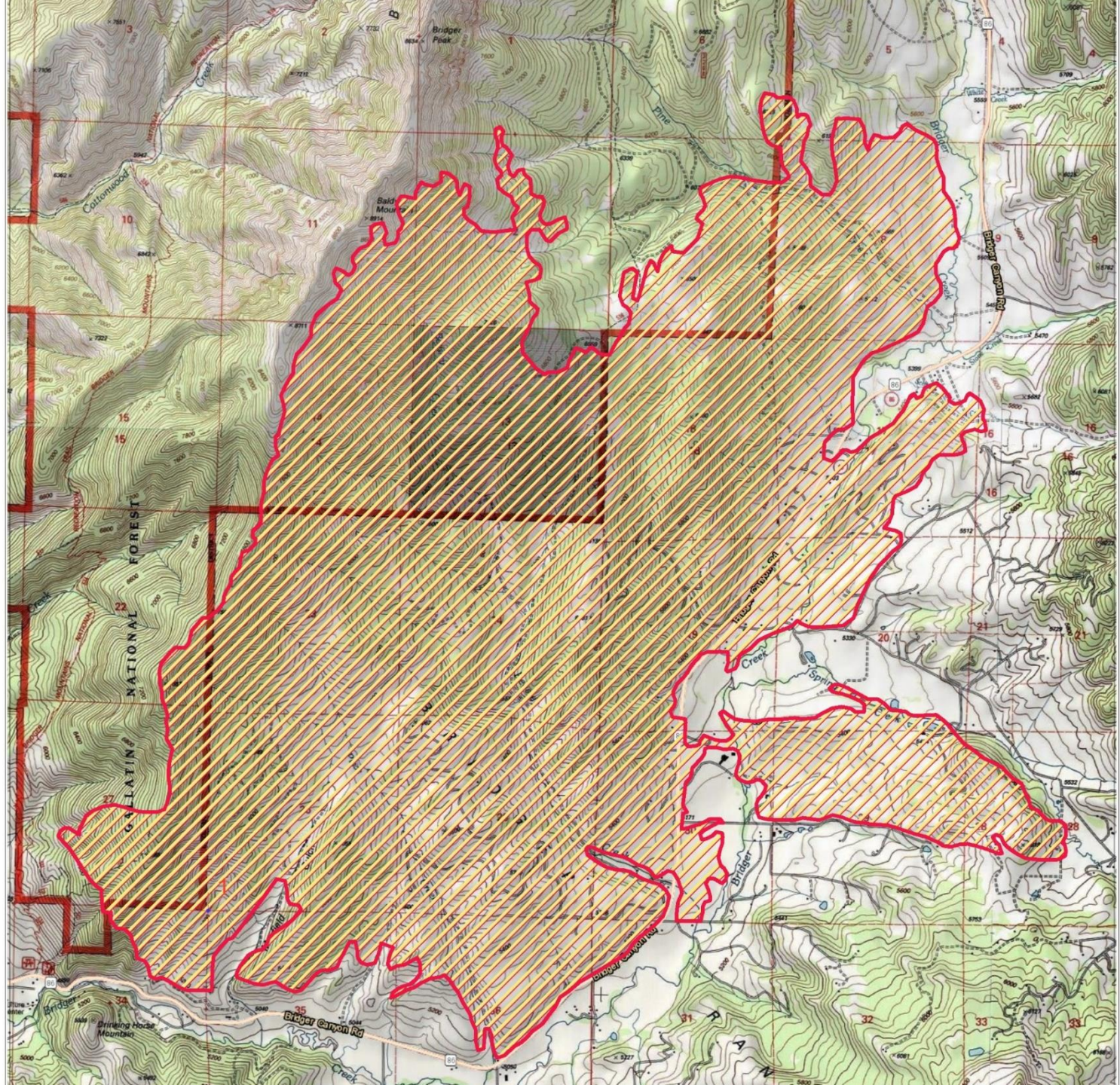
Professional Forester

Graduated with a BS in Forest Operations from the University of Montana

Worked at Northwest Management Inc. Since 2011

BRIDGER FOOTHILLS FIRE

- Started Sept 4th
- Burned 8,224 Acres
 - Approx. 1,425 Acres on USFS
 - Approx. 6,799 Acres on Private





NMI SERVICES

- Harvest Planning
 - Project administration and layout
 - Facilitation between loggers and buyers and land owners
- Forest evaluation and appraisal
 - For use in insurance claims and lawsuits
 - Assigns a monetary value to timber land that is not necessarily merchantable
- Vegetation clean up and removal
 - Removal of hazard trees, dead trees, and forest debris
 - pile burning

NMI SERVICES CONT.

- Reforestation and Seedling Establishment
 - Custom grow ordering and seedling acquisition
 - Administration of planting operations
- Grass restoration
 - Ordering of native grass seeds
 - Administer grass seeding
 - Administer weed spraying
- Insect mitigation
 - Use of MCH pheromones to protect living Doug-fir
 - Supply MCH packets and hang MCH packets
- Tech Services
 - Provide accurate maps of forest land and property boundaries



NEXT STEPS

- Schedule a site visit with Northwest Management Inc Foresters
 - Chuck is available for individual site visits starting Friday Oct 30th
 - Before meeting with Chuck land owners are encouraged to talk to neighbors to start a cooperative project.
- Create a timeline of when forest activities are to take place
- If interested call or email Chuck Gesme with the following information
 - Name, phone number, address, goals for the property



NMI FEES

- NMI Will offer 1 free site visit to assess forest projects
- Hourly rates are applied for NMI foresters at the following rates
 - NMI Forester – \$75 per hour
 - NMI Forest Tech – \$65 per hour
- Millage will be billed at a rate of \$.60 per mile



CONTACT

Chuck Gesme

Ph: (406) 802-4894

Email: Gesme@northwestmanagement.com

Helena Office

Address: 1417 Orange Ave, Helena MT 59601

Ph: (406) 442-7555

Website: www.northwestmanagement.com